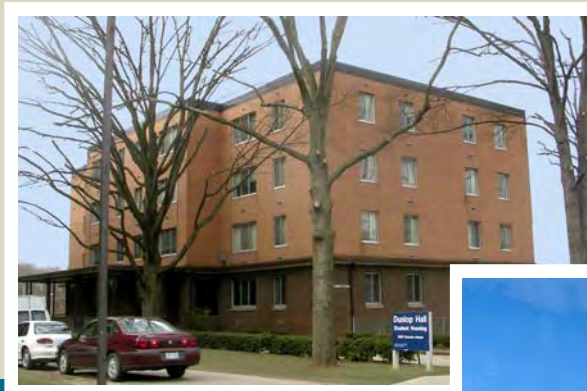




Student/Resident Housing Information

Dunlop Hall



Jefferson Place



Maier Village

Charleston Medical Center
Housing Corporation
Charleston, West Virginia

Welcome

From The Charleston Medical Center Housing Corporation, CMCHC

The Housing Corporation wants to assist you in making your relocation and stay in the Charleston area as easy and pleasant as possible. There are four types of housing for which students / residents may apply:

MEMORIAL HOSPITAL CAMPUS

1. **Dunlop Hall (no pets):** 3000 Staunton Ave SE, Chas. WV 25304
A four-story apartment complex that contains thirty- two one and two bedroom units. Rental prices for Dunlop Hall include all utilities and cable TV, telephone not included. Furniture is optional at an additional monthly charge. (see application form for details)
2. **Maier Village:** 101 29th Street SE (cluster 1) **(no pets)**, 105 29th Street SE (cluster 2) **(no pets)** and *2800 Hart Street, Chas. WV 25304 (cluster 3) **(cats only)**.
A housing development consisting of sixty-five one, two and three bedroom modern brick town houses situated in three clusters. Rental prices include all utilities except electric. All units are rented unfurnished.
3. **Residential Houses:** Charleston Area Medical Center owns a number of two, three and four bedroom houses. Rental prices do not include utilities and are rented unfurnished. Information is available on request.

GENERAL HOSPITAL CAMPUS

4. **Jefferson Place:** 200 Morris Street, Chas. WV 25302.
A two-story, pet friendly, apartment complex containing twenty-four one, two and three bedroom units. Rental prices for Jefferson Place include all utilities except electric. All units are rented unfurnished.

All the above housing is within easy walking distance of either CAMC Memorial or CAMC General Hospital. On the reverse side are the rental rates. Additional information can be found at this link: <http://camc.wvu.edu/info/pdf/cmchousing.pdf>

Housing Leases are on an annual basis, July 1st through June 30th . Demand for housing is high, so go to the link above and fill out an application and return before midnight, April 15th.

Housing applications are prioritized according to established guidelines.
All assignments are awarded the first week of May via [email](#).

*** PETS – refer to the application at the link above for additional information**

Charleston Medical Center Housing Corporation

CMCHC • 110 29th St. SE • Charleston, WV 25304 • (304) 345-0171

Rental Rates Effective July 1, 2018

The Charleston Medical Center Housing Corporation Board of Directors has set the following rental rates for an interim period beginning July 1, 2018 through June 30, 2019.

Dunlop Hall

	Student	Resident
Efficiency	\$510/mo.	\$560/mo.
1 Bedroom	\$600/mo.	\$660/mo.
2 Bedrooms	\$680/mo.	\$760/mo.
3 Bedrooms {Transients Only}	\$15.50/per day.	\$17 per day

Dunlop Hall – All Utilities and Cable TV Included In Rental Rates.

Maier Village*

	Student	Resident
1 Bedroom	\$600/mo.	\$660/mo.
2 Bedrooms {conventional}	\$675/mo.	\$730/mo.
2 Bedrooms {cathedral}	\$700/mo.	\$755/mo.
3 Bedrooms	\$835/mo.	\$890/mo.

Maier Village – All Utilities Included In Rental Rates EXCEPT Electric.

Jefferson Place*

	Student	Resident
1 Bedroom	\$600/mo.	\$660/mo.
2 Bedrooms	\$745/mo.	\$785/mo.
3 Bedrooms	\$860/mo.	\$905/mo.

Jefferson Place – All Utilities Included In Rental Rates EXCEPT Electric.

CAMC Houses

	Student	Resident
2 Bedroom	\$620/mo.	\$670/mo.
3 Bedrooms	\$670/mo.	\$720/mo.
4 Bedrooms	\$720/mo.	\$770/mo.

CAMC Houses – Utilities are NOT Included In Rental Rates.

***PET FEES: Management must approve pets prior to lease signing.**

Jefferson Place: \$30 per month for cats and dogs.

Maier Village (Cluster 3 only*): \$30 per month for cats. (As noted on the application form.)

Charleston Medical Center Housing Corporation

CMCHC • 110 29th St. SE • Charleston, WV 25304 • (304) 345-0171

Charleston Medical Center Housing Corporation
CMCHC ♦ 110 29th Street SE ♦ Charleston, WV 25304 ♦ (304) 345-0171

APPLICATION FOR HOUSING

Date: _____ Date Housing Needed: _____

Male () yrs. / _____
 Female course study program

Name: _____
First name Last name Middle Initial

Permanent Address: _____
Street City State Zip Phone

Present Address: _____
Street City State Zip Phone

EMAIL ADDRESS (please include): _____

IMPORTANT: All future communication and application correspondence will be done by email. Please include an email address that you frequently check

- Single
- Family
- Single Parent Family

Children living with you:

- None
- One
- Two or More

Eligibility to rent with CMCHC or CAMC housing is limited to Residents and Students only. Please note; participants in programs of two (2) or more years receive priority for housing assignments. State your classification below:

STUDENT - _____
Major Year Graduating Institutional/School

RESIDENT - _____
Specialty Year – PGY

A deposit of \$100.00 is required with each application that will be applied towards the security deposit. This deposit is refundable if the application is withdrawn by June 1st, or if an assignment is not awarded. A Security Deposit equal to the 1st month's rent is required at the time of lease signing.

Type of Apartment/House desired: Indicate your choice by number (1st, 2nd, 3rd, etc.)

*Dunlop Hall <i>No Pets allowed</i>	Jefferson Place <i>Cats & Dogs allowed</i>	Maier Village <i>Cluster 3 Only – Cats only</i>	Houses <i>Cats & Dogs allowed</i>
___ One Bedroom	___ One Bedroom	___ One Bedroom	___ One Bedroom
___ Two Bedroom	___ Two Bedroom	___ Two Bedroom (Conventional)	___ Two Bedroom
	___ Three Bedroom	___ Two Bedroom (Cathedral)	___ Three Bedroom
		___ Three Bedroom	___ Four Bedroom

* **Dunlop Hall only** (furnished is available): \$25 for (1) bedroom. \$30 for (2) bedroom. Check the box if furnished is desired.

PETS: Please indicate what pet and how many. CATS (#___) DOGS (#___)

NOTE: There is a security deposit equal to (1) month's rent for pets and an additional monthly charge of \$30.

MAIL THIS FORM & \$100 DEPOSIT CHECK TO: CMCHC, 110 29th Street SE, Charleston, WV 25304

CMCHC Housing Pamphlet can be found at - <http://camc.wvu.edu/info/pdf/cmchousing.pdf>

Jefferson Place



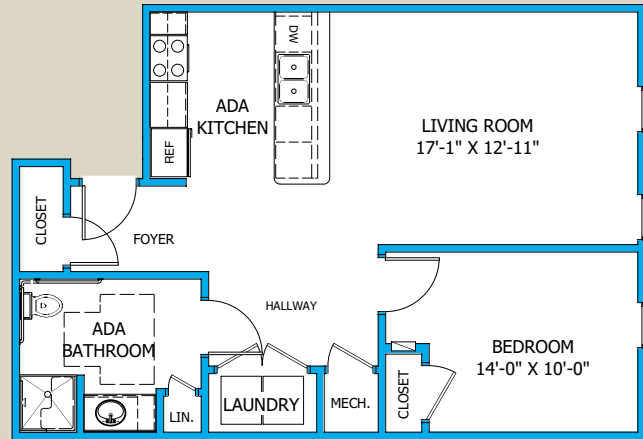
The Charleston Medical Center Housing Corporation operates 24 one, two and three bedroom apartments that are located at the corner of Quarrier and Morris Streets, one block south of the General Hospital campus of the Charleston Area Medical Center. The apartments are available to students and residents of WVU/CAMC and are limited to the time period coinciding with their educational experience. Children are welcome. Pets are permitted with the prior approval of the Housing Corporation Management and prior to lease signing.

Units in Jefferson Place are unfurnished and require a one-year lease. Selected one and two bedroom apartments are handicap accessible. All units have fully furnished kitchens including range and oven, microwave oven, refrigerator, dishwasher and disposal. Each unit contains a full size washer and dryer. Cable TV, telephone and Internet service are the responsibility of the individual tenants. All utilities are included in the rent except electric. The two and three bedroom units both have two full baths. Blinds have been installed in all windows. There is a large lounge on the second floor available to all tenants. Parking is available on site and is gated with card access. The building is also designed with a card access security system.

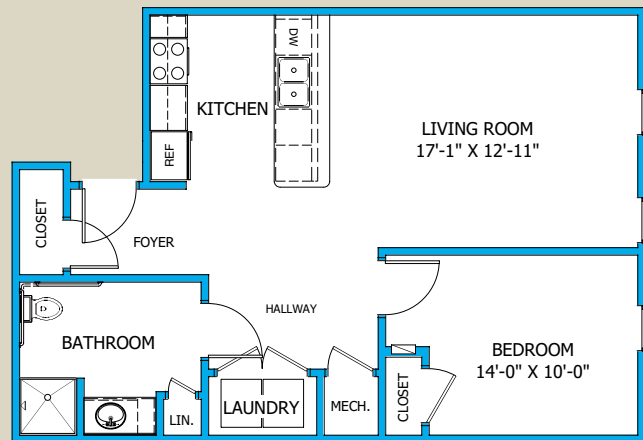
Jefferson Place is conveniently located within easy walking distance of Charleston Town Center Mall, the Clay Center for the Arts and Sciences, Capitol Market (farmer's market), Appalachian Power Park (minor league baseball) and a number of local restaurants.

Charleston Medical Center Housing Corporation

Jefferson Place

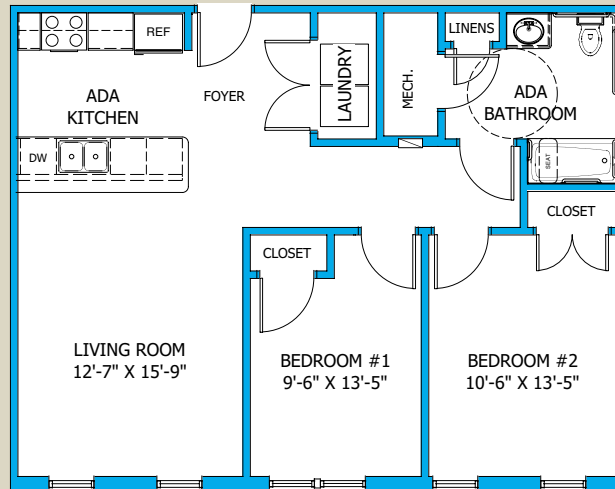


1 BEDROOM APARTMENT
ADA ACCESSIBLE
734 SF

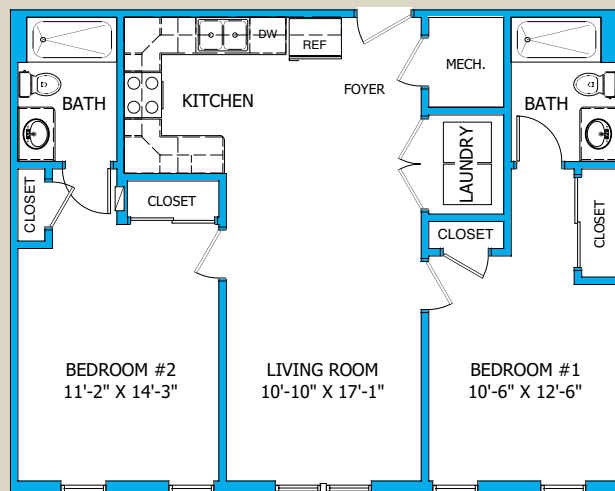


1 BEDROOM APARTMENT
734 SF

Jefferson Place

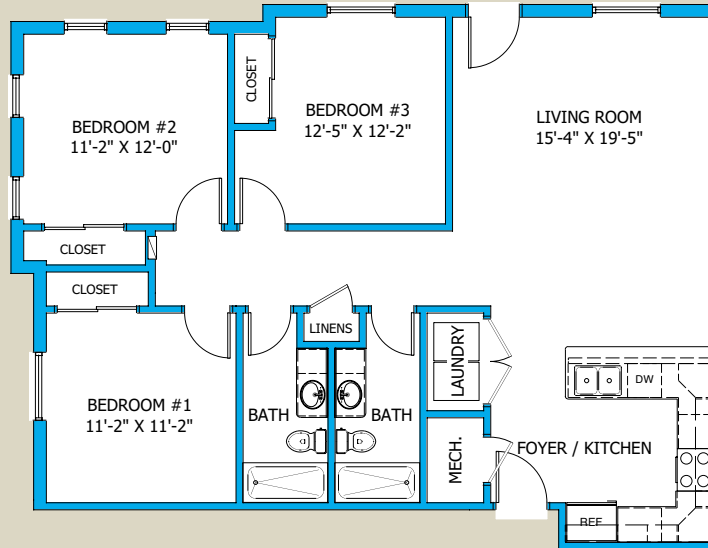


2 BEDROOM APARTMENT
ADA ACCESSIBLE
858 SF

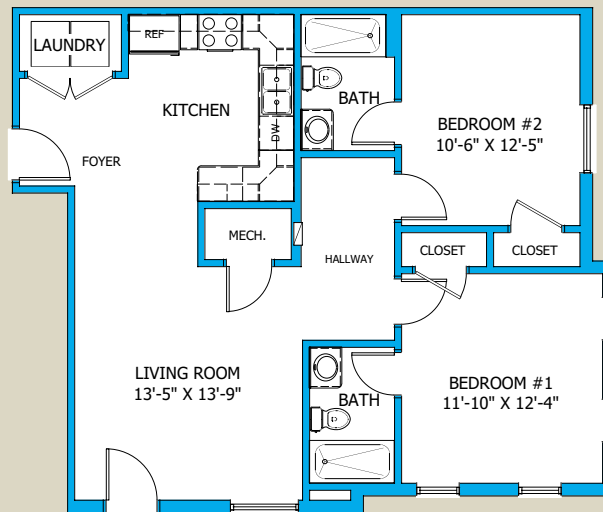


2 BEDROOM APARTMENT
858 SF

Jefferson Place



3 BEDROOM APARTMENT
CORNER UNITS
1146 SF



2 BEDROOM APARTMENT
CORNER UNITS
886 SF

Dunlop Hall



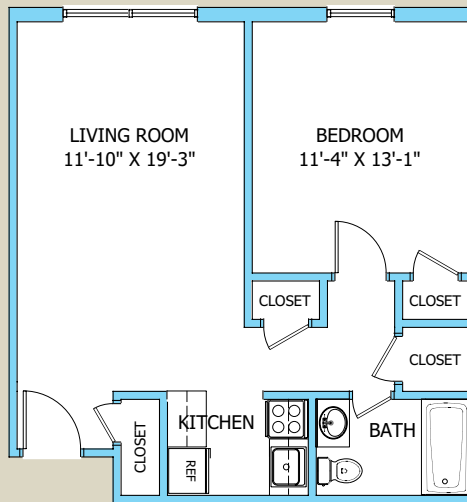
The Charleston Medical Center Housing Corporation operates 32 efficiency, one, two and three bedroom apartments that are located in Dunlop Hall on the grounds of the Memorial Hospital campus of the Charleston Area Medical Center. The apartments are available to students and residents of WVU/CAMC and are limited to the time period coinciding with their educational experience. Children are welcome. Pets are not permitted.

The first floor of Dunlop Hall is reserved for transient students doing rotations at CAMC. These efficiency and three bedroom units are complete with major items of furniture. Linens and kitchen utensils are not furnished. The second, third and fourth floors contain one and two bedroom units that are rented on a one-year basis. Rental furniture for these upper floor units is available for an additional fee of \$25.00/month for a one bedroom and \$30.00/month for two bedroom units. Blinds are provided as window treatment throughout the apartments. Coin operated washers and dryers are located on the lower floor of the building.

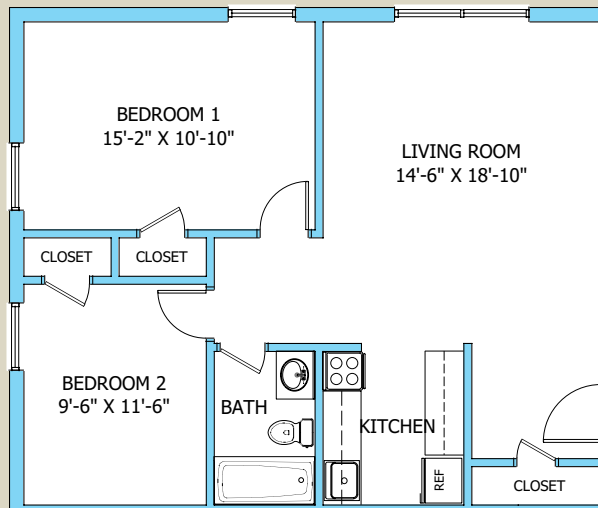
A fenced green space is provided for your enjoyment. Tenant-owned equipment (grills, tables, chairs, toys, etc.) may be used in this area, but must be stored when not in use. There is also a spacious lounge on the lower floor for tenant use. A storage locker approximately 4'x6' is provided for each apartment in a separate locker room. Each apartment is equipped with basic television cable hookup, and with the exception of telephone installation and service, rent includes all utilities. Adequate parking space is available in the parking garage adjoining the building property.

Charleston Medical Center Housing Corporation

Dunlop Hall



DUNLOP HALL 1 BEDROOM



DUNLOP HALL 2 BEDROOM

Maier Village

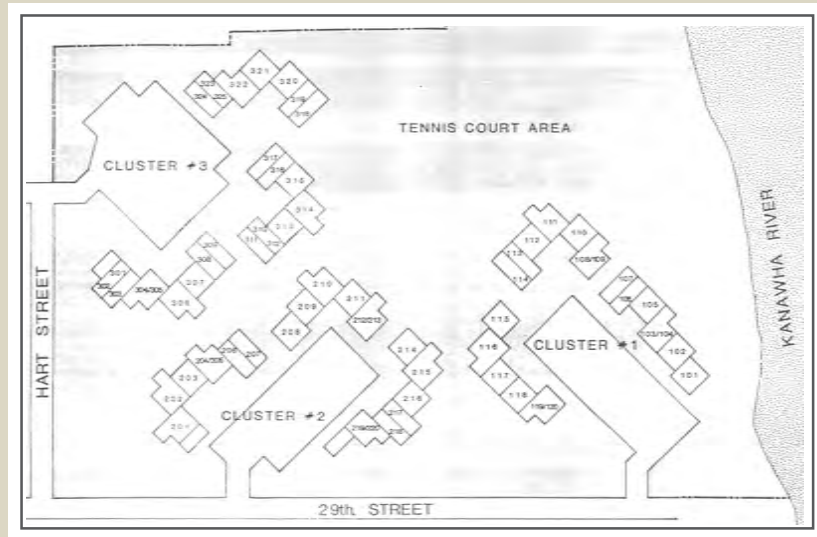
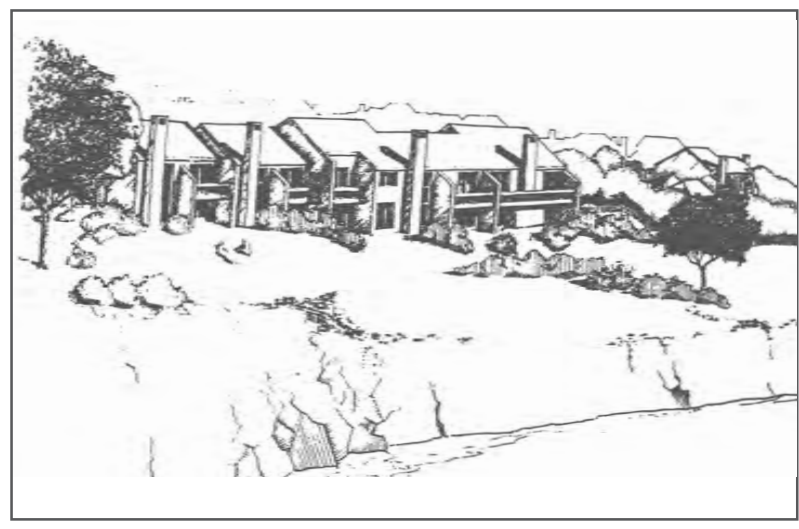


The Charleston Medical Center Housing Corporation operates 65 one, two and three bedroom townhouse units that are located on the Kanawha River two blocks west of the Memorial Hospital of the Charleston Area Medical Center. The townhouses are individualized through the use of a variety of interior arrangements. Many units include fireplaces and balconies. Children are welcome. Pets are not permitted. The development contains a children's playground and two tennis courts. The apartments are available to students and residents of WVU/CAMC and are limited to the time period coinciding with their educational experience.

Units in Maier Village are unfurnished and require a one-year lease. Kitchens include refrigerator, self-cleaning oven range, dishwasher and disposal. Blinds have been installed in all windows, however the tenant must provide the sliding glass door treatment. Each unit contains a washer and dryer. A community building is available for the storage of bicycles and lawn furniture. All utilities are included in the rent except electric. Cable TV, telephone and Internet service are the responsibility of the individual tenants. Adequate parking is available in the parking areas adjoining the complex.

Charleston Medical Center Housing Corporation

Maier Village



Charleston Medical Center Housing Corporation

Maier Village



ONE BEDROOM (2nd. floor plan)

UNIT NOS. 120, 305.

REVERSED PLAN

UNIT NOS. 104, 109, 205, 213, 220



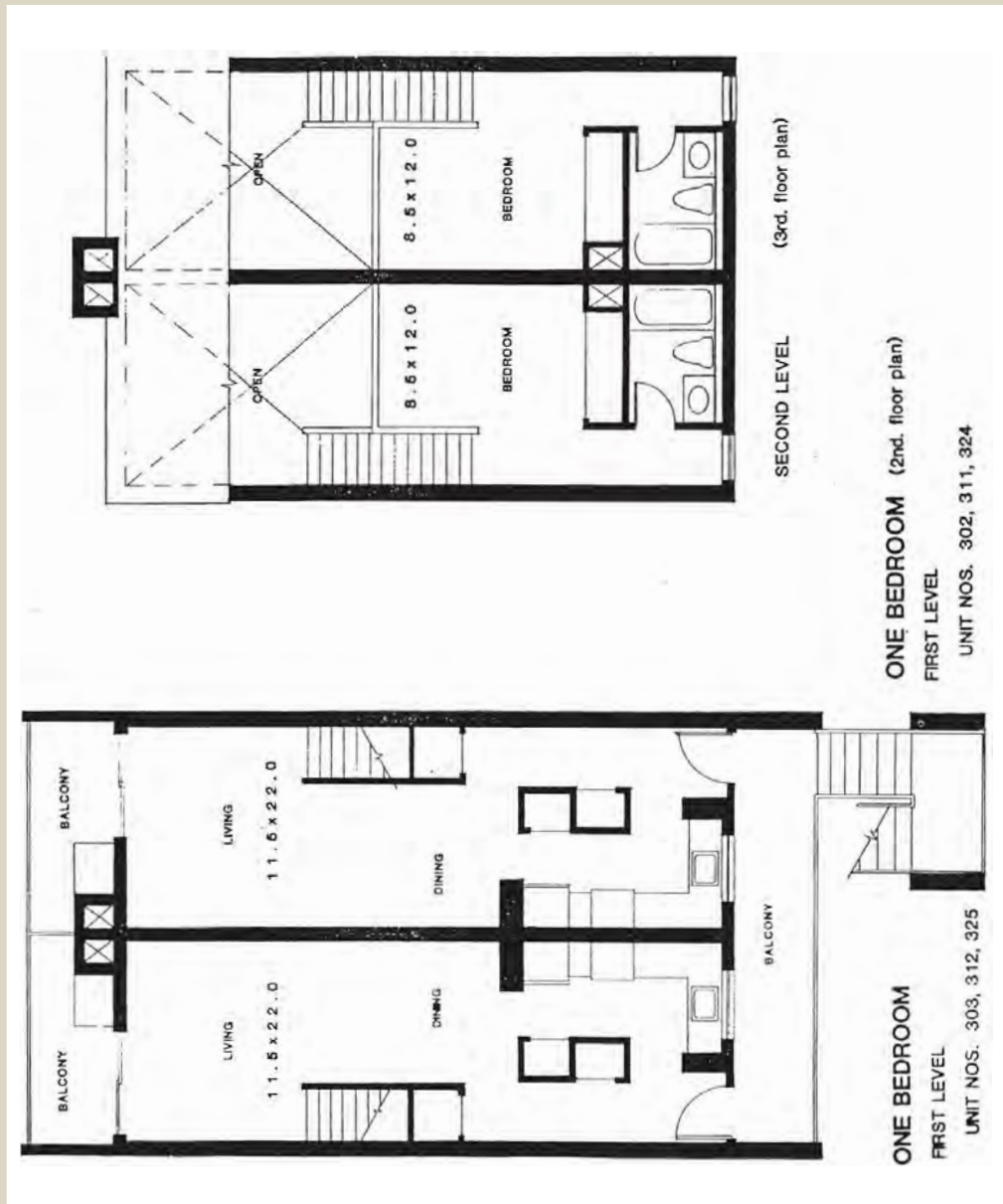
ONE BEDROOM (1st. floor plan)

UNIT NOS. 119, 304.

REVERSED PLAN

UNIT NOS. 108, 204, 212, 219.

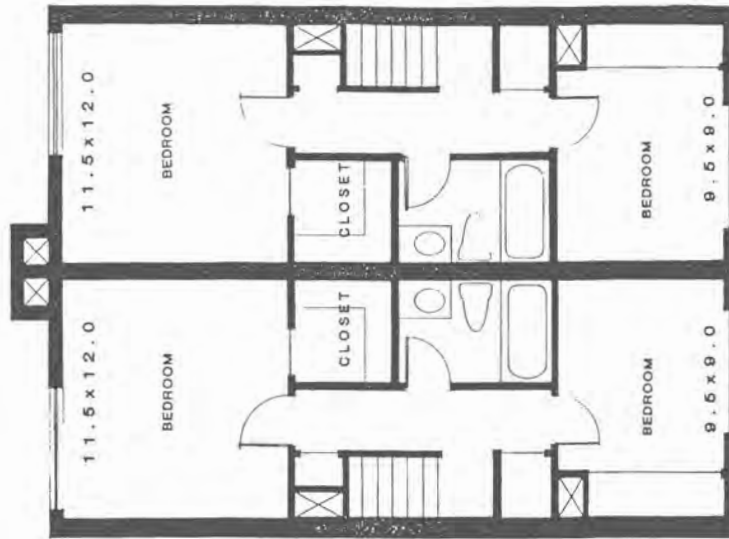
Maier Village



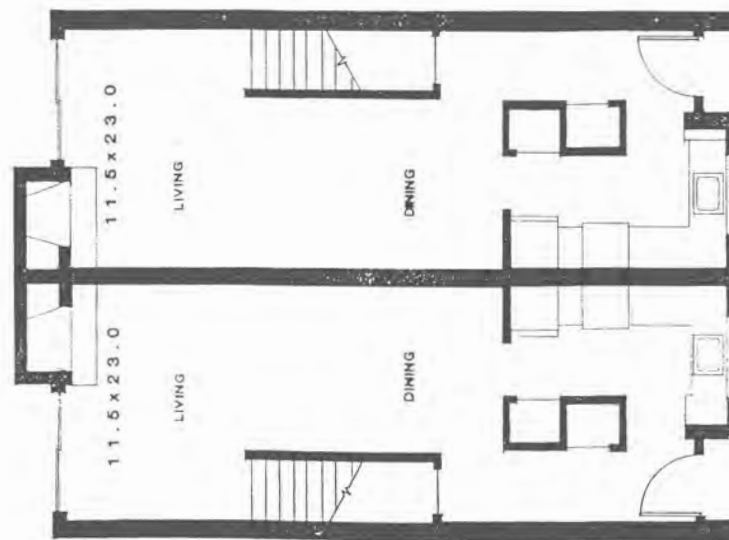
Maier Village



Maier Village

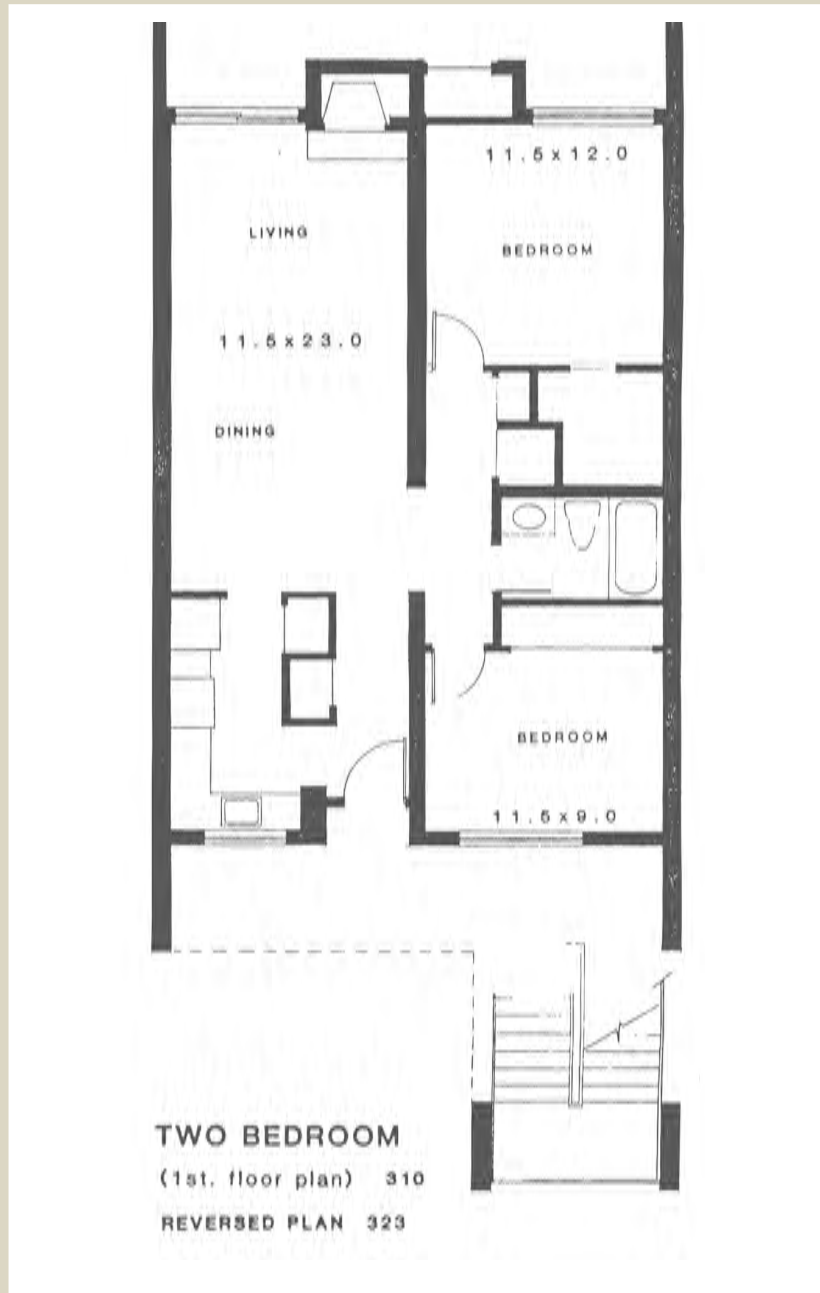


TWO BEDROOM (2nd. floor plan)
 units w/ balconies 106, 113, 316, 318
 units w/ balconies 107, 114, 317, 319



TWO BEDROOM (1st. floor plan)
 UNIT NOS. 106, 113, 207, 218,
 107, 114, 206, 217, 308, 316, 318.
 114, 206, 217, 309, 317, 319.

Maier Village



Charleston Medical Center Housing Corporation

Maier Village



THREE BEDROOM (1st. floor plan)
UNIT NOS. 202, 314.
REVERSED PLAN
UNIT NOS. 111, 116, 210, 306, 321.

THREE BEDROOM (2nd. floor plan)
UNIT NOS. 202, 314, 201.
REVERSED PLAN
UNIT NOS. 111, 116, 210, 306, 321, 215.

The image displays two floor plans for a three-bedroom unit. The 1st floor plan shows a living area (11.5 x 23.0), a dining area, a bedroom (11.5 x 12.0), a bathroom, and a kitchen. The 2nd floor plan shows an open area, a bedroom (11.5 x 11.0), another bedroom (9.0 x 14.0), a bathroom, and a staircase.

Maier Village

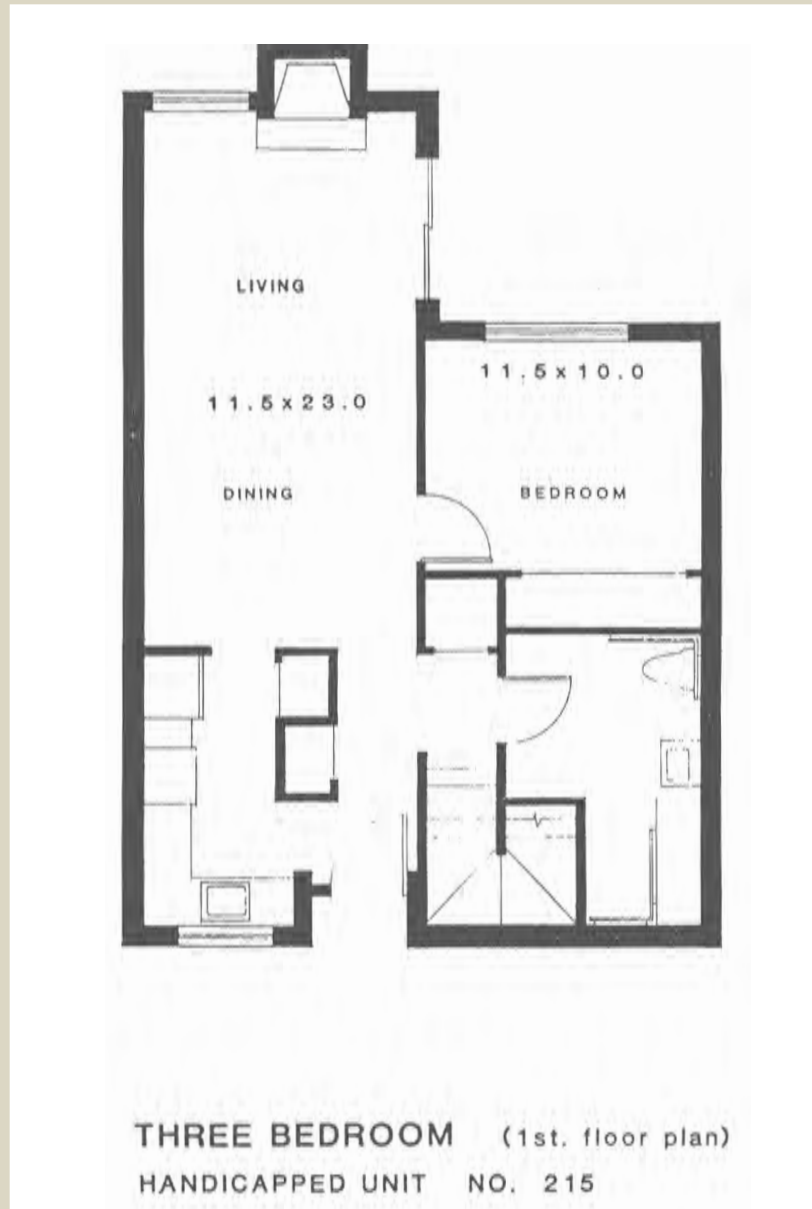


TWO BEDROOM (1st. floor plan)
HANDICAPPED UNIT NO. 301



ONE BEDROOM (1st. floor plan)
HANDICAPPED UNIT NO. 103.

Maier Village



Charleston Medical Center Housing Corporation
110 29th St. SE • Charleston, WV 25304 • (304) 345-0171